

## Centers for Medicaid and CHIP Services (CMS) Innovation Accelerator Program (IAP) on Medicaid-Housing Partnerships

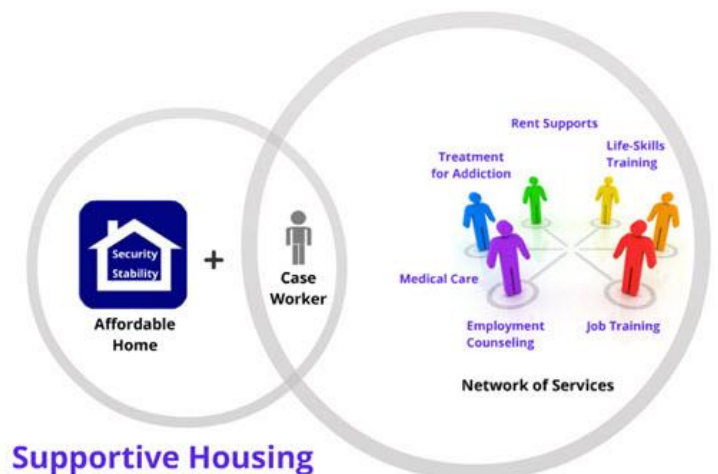
### What is the IAP?

The IAP is an intensive, six-month technical assistance opportunity designed to help states support individuals served by Medicaid in 1) accessing and retaining stable housing; and 2) meaningfully engaging with providers they choose to achieve their health goals. Connecticut was selected through a competitive process as one of eight states to participate. The application was a collaborative effort among partner organizations including the State of Connecticut Departments of Social Services, Housing, Mental Health & Addiction Services, Developmental Services, and the Office of Policy and Management, the Connecticut Housing Finance Authority, the Partnership for Strong Communities and the Corporation for Supportive Housing.



The IAP seeks:

- 1) To help states align policies and funding between state Medicaid, disability services and housing agencies to maximize affordable and supportive housing opportunities.
- 2) To ensure that people experiencing chronic homelessness, people identified as high utilizers of health care services, and/or individuals with disabling conditions who are exiting institutional settings have access to a robust service package linked to housing to improve access to health care and outcomes and reduce costs.
- 3) To help states take advantage of opportunities in Medicaid to cover and finance services in supportive housing while maximizing the use of other resources to pay for non-Medicaid supports.



## Why should Medicaid partner with stakeholders in housing?

- Certain vulnerable individuals served by Medicaid are unable to effectively access and engage with goals and action steps around their health unless and until they are stably housed and adequately supported with tenancy-sustaining wrap-around services.
- We already have considerable evidence that transition and tenancy-sustaining supports are effective at achieving housing stability as well as improved health, community integration and life satisfaction.
- We have two major sources of this data: Money Follows the Person (MFP) and specific Connecticut supportive housing initiatives (Connecticut Collaborative on Reentry, or CCR, formerly known as FUSE; Connecticut Integrated Health and Housing Neighborhoods-Social Innovation Fund, or SIF).



## How does the IAP align with our social policy agenda in Connecticut?

Our observation is that Connecticut is coming at this from a position of great strength in relation to other states. The IAP represents an opportunity to weave together all of the following strands:

- vision and leadership by Governor Malloy and the Connecticut legislature around 1) the goal and statewide Opening Doors plan to end homelessness, including participation in the Zero: 2016 initiative targeted at ending chronic homelessness by the end of the year; 2) the Statewide Plan to Rebalance Long-Term Services and Supports effort that includes diverse strategies (an important example of which is the "housing plus supports" Money Follows the Person model) designed to identify, study and remedy barriers to choice, self-direction and community integration for individuals with disabilities and older adults; and 3) Second Chance Society justice reform;
- a dedicated entity that supports, coordinates, and implements new and existing supportive housing initiatives across the state – the Interagency Committee on Supportive Housing - comprised of departments with jurisdiction over human services, housing, housing financing, corrections, and veterans' affairs, as well as leading community stakeholders;

- extensive experience in the development and implementation of permanent supportive housing models for individuals and families with disabilities who are experiencing homelessness;
- investment of state funding;
- existing data match activities, through the CCR and SIF supportive housing initiatives, between Medicaid and the Connecticut Homeless Management Information System (CT HMIS), and HMIS and corrections data; and
- a unique, self-funded Medicaid model that has moved entirely away from capitated managed care arrangements and is now 1) employing a fully integrated set of claims data to predictively model and risk stratify Medicaid members; and 2) intervening to proactively address the needs of high cost, high need individuals, as well as those who have experienced barriers related to lack of stable housing, through Person-Centered Medical Homes and Administrative Services Organization-based Intensive Care Management.

### **What do the partner organizations expect to achieve through IAP?**

- We will start by expanding existing data matches (e.g. Medicaid and HMIS, HMIS and corrections) to include other data sets, and use the results of this matching to inform who we prioritize for this initiative.
- Grounded in that data, we will work with stakeholders to develop a set of recommendations around Medicaid coverage of:
  - a core set of engagement activities;
  - a core set of transition and tenancy-sustaining supports; and
  - a menu of additional services that is sufficiently broad to meet the needs of diverse individuals (e.g. individuals who have experienced homelessness, older adults, individuals with physical disabilities, individuals with intellectual disabilities).
- We will work with providers of supportive housing services to help ready them to participate as Medicaid providers.

### **How can I participate?**

The partner organizations will liaise with all of the leading stakeholder bodies that are involved in Medicaid and housing work, including Reaching Home and its associated groups, the Money Follows the Person Steering Committee, the Medical Assistance Program Oversight Council, and the Behavioral Health Partnership Oversight Council. We will be seeking feedback on who we prioritize, what services we will propose to cover, and what we can do to provide support to both Medicaid members and community providers.

## **Where can I get more information?**

CMS web page highlighting Medicaid-Housing IAP activities and resources:

<https://www.medicaid.gov/state-resource-center/innovation-accelerator-program/community-integration-ltss/ci-ltss.html>

CMS bulletin, "Coverage of Housing-Related Activities and Services for Individuals with Disabilities":

<https://www.medicaid.gov/federal-policy-guidance/downloads/CIB-06-26-2015.pdf>

CTN video of recent iForum:

<http://ct-n.com/ctnplayer.asp?odID=13038>

DSS presentation to the Medical Assistance Program Oversight Council (MAPOC) on IAP:

[https://www.cga.ct.gov/med/council/2016/0610/20160610ATTACH\\_Innovation%20Accelerator%20Program%20on%20Medicaid-Housing%20Partnerships%20Presentaion.pdf](https://www.cga.ct.gov/med/council/2016/0610/20160610ATTACH_Innovation%20Accelerator%20Program%20on%20Medicaid-Housing%20Partnerships%20Presentaion.pdf)

DMHAS presentation, "Past, Present and Future of Supportive Housing in Connecticut":

<http://www.ct.gov/dmhas/lib/dmhas/publications/PSH-PastPresentFuture.pdf>

Rebalancing overview in DSS presentation, "Connecticut HUSKY Health: Improving Health, Enabling Independence and Integration, Controlling Costs" - see last section:

[https://www.cga.ct.gov/med/council/2016/0222/20160222ATTACH\\_DSS%20Presentation.pdf](https://www.cga.ct.gov/med/council/2016/0222/20160222ATTACH_DSS%20Presentation.pdf)